

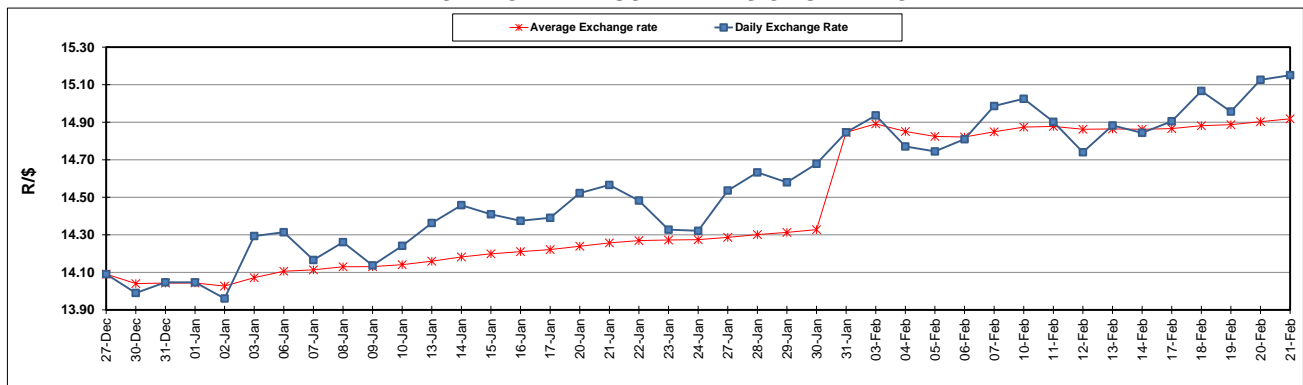
	PETROL 95 ULP	PETROL 93 ULP & LRP	DIESEL 0.05%	DIESEL 0.005%	ILL. PAR.
GAUTENG PUMP PRICE (SA c/l) AS FROM 05/02/2020	1,603.000	1,571.000	-	-	-
WHOLESALE PRICE (SA c/l) AS FROM 05/02/2020	-	-	1,457.260	1,462.660	924.728
SINGLE NATIONAL MAXIMUM RETAIL PRICE	-	-	-	-	1,176.000
BASIC FUEL PRICE - 21/02/2020 (SA c/l)	693.646	681.268	701.753	706.114	682.065
PRESS RELEASE CONTRIBUTION TO BFP 05/02/2020 - 21/02/2020 (SA c/l)	686.970	664.970	737.630	743.030	734.128
UNIT OVER/(UNDER) RECOVERY - 21/02/2020 (SA c/l)	(6.676)	(16.298)	35.877	36.916	52.063
AVERAGE BASIC FUEL PRICE 31/01/2020 - 21/02/2020	674.306	662.363	689.759	695.466	672.816
AVERAGE UNIT OVER/(UNDER) RECOVERY 31/01/2020 - 21/02/2020	15.101	5.045	48.808	48.502	61.874

ANALYSIS MOVEMENT OF AVERAGE OVER/(UNDER) RECOVERY

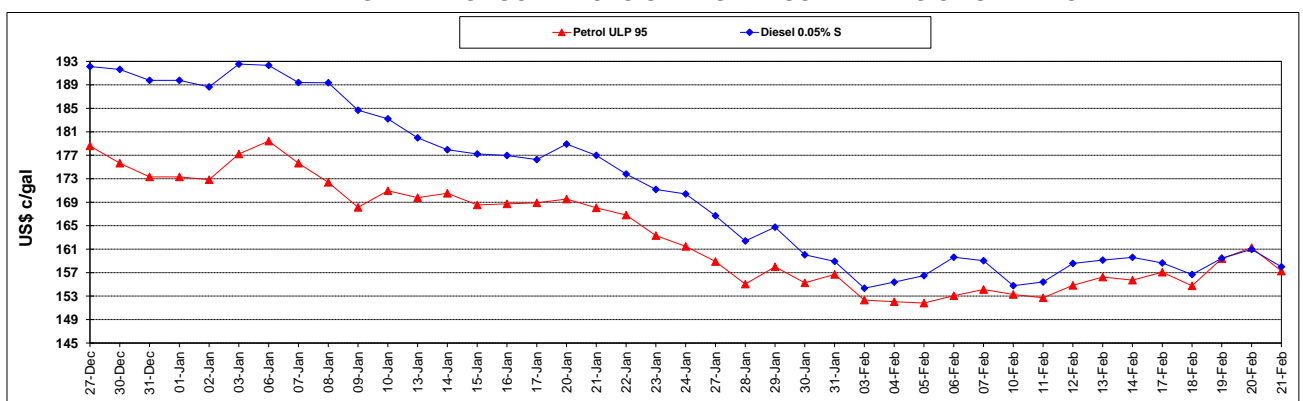
	PETROL 95	PETROL 93	DIESEL 0.05%	DIESEL 0.005%	ILL. PAR.
- MOVEMENT IN INTERNATIONAL PRODUCT PRICES	41.797	31.267	76.116	76.035	88.511
- MOVEMENT IN EXCHANGE RATE	(26.695)	(26.222)	(27.307)	(27.533)	(26.636)
AVERAGE UNIT OVER/(UNDER) RECOVERY 31/01/2020 - 21/02/2020	15.101	5.045	48.808	48.502	61.874

R/\$ EXCHANGE RATE - (R/\$15.1505 - 21/02/2020)

EXCHANGE RATE USED IN BASIC FUEL PRICE



INTERNATIONAL PRODUCT PRICES OF BASKET USED IN BASIC FUEL PRICE



BASIC FUEL PRICE IN SA CENTS PER LITRE

